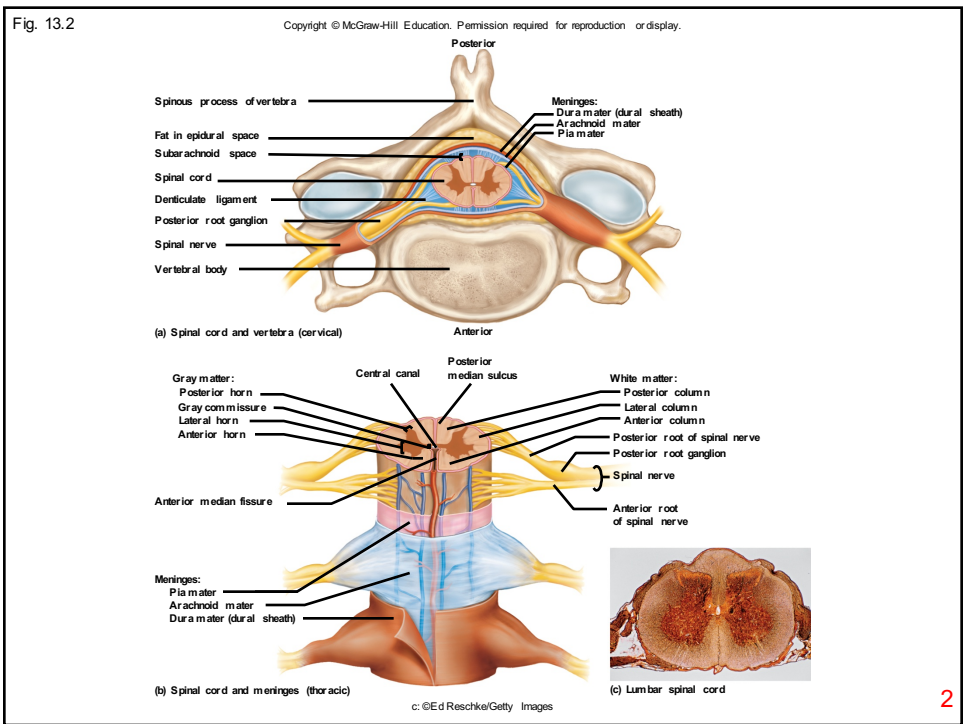


1



2

Table 13.1

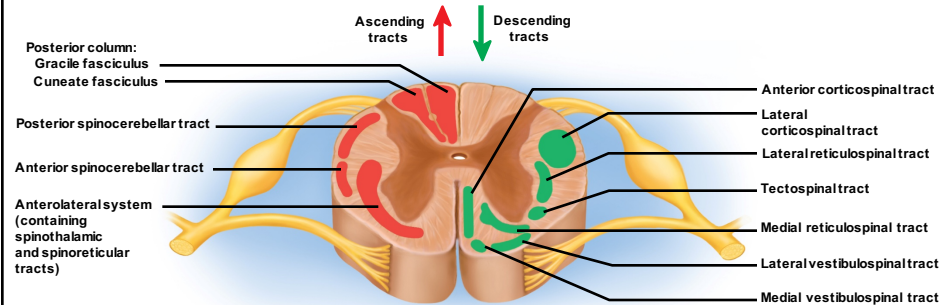
Copyright © McGraw-Hill Education. Permission required for reproduction or display.

TABLE 13.1 Major Spinal Tracts			
Tract	Column	Decussation	Functions
<b>Ascending (sensory) tracts</b>			
Gracile fasciculus	Posterior	In medulla	Sensations of limb and trunk position and movement, deep touch, visceral pain, and vibration, below level T6
Cuneate fasciculus	Posterior	In medulla	Same as gracile fasciculus, from level T6 up
Spinothalamic	Lateral and anterior	In spinal cord	Sensations of light touch, tickle, itch, temperature, pain, and pressure
Spinoreticular	Lateral and anterior	In spinal cord (some fibers)	Sensation of pain from tissue injury
Posterior spinocerebellar	Lateral	None	Feedback from muscles (proprioception)
Anterior spinocerebellar	Lateral	In spinal cord	Same as posterior spinocerebellar
<b>Descending (motor) tracts</b>			
Lateral corticospinal	Lateral	In medulla	Fine control of limbs
Anterior corticospinal	Anterior	In spinal cord	Fine control of limbs
Tectospinal	Anterior	In midbrain	Reflexive head turning in response to visual and auditory stimuli
Lateral reticulospinal	Lateral	None	Balance and posture; regulation of awareness of pain
Medial reticulospinal	Anterior	None	Same as lateral reticulospinal
Lateral vestibulospinal	Anterior	None	Balance and posture
Medial vestibulospinal	Anterior	In medulla (some fibers)	Control of head position

3

Fig. 13.4

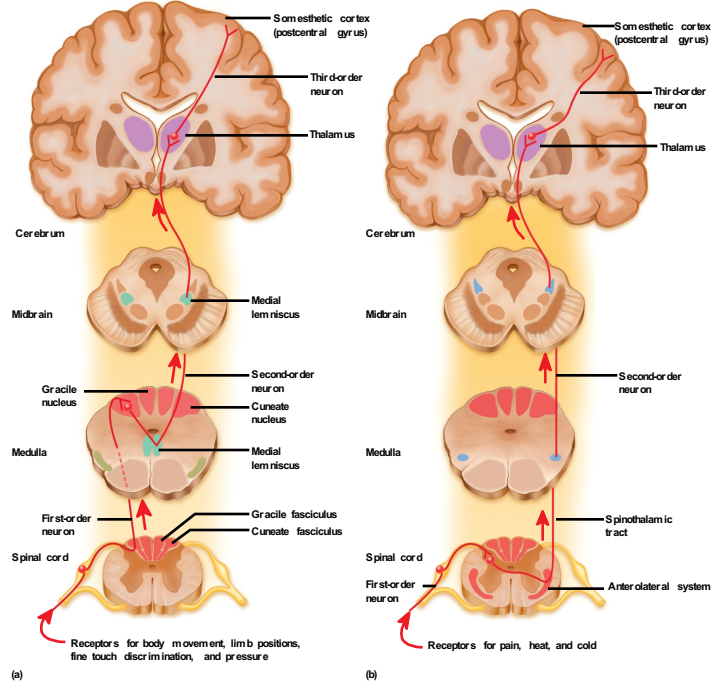
Copyright © McGraw-Hill Education. Permission required for reproduction or display.



4

Fig. 13.5

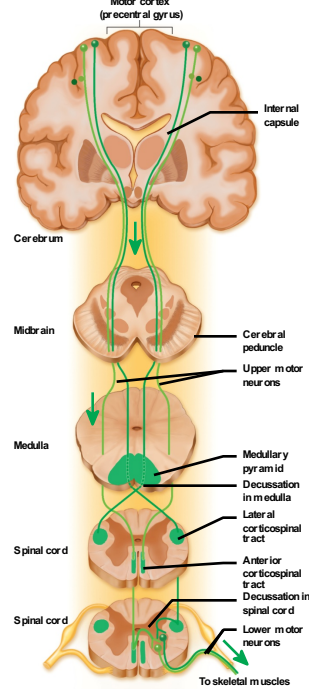
Copyright © McGraw-Hill Education. Permission required for reproduction or display.



5

Fig. 13.6

Copyright © McGraw-Hill Education. Permission required for reproduction or display.



6

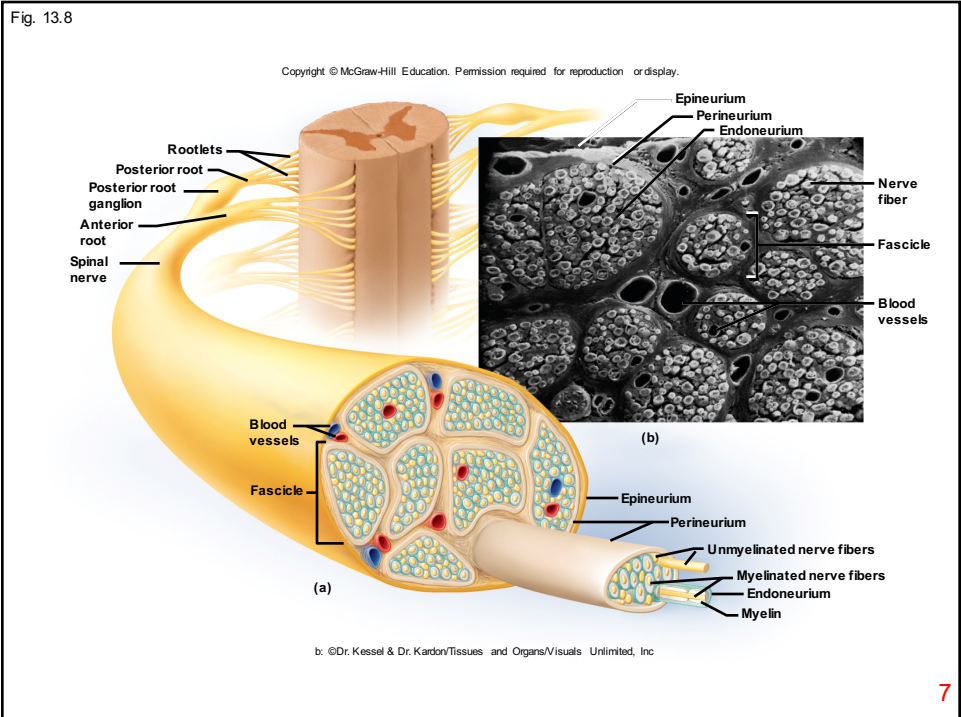


Table 13.2

Copyright © McGraw-Hill Education. Permission required for reproduction or display.

<b>TABLE 13.2</b>	
<b>The Classification of Nerve Fibers</b>	
<b>Class</b>	<b>Description</b>
Afferent fibers	Carry sensory signals from receptors to the CNS
Efferent fibers	Carry motor signals from the CNS to effectors
Somatic fibers	Innervate skin, skeletal muscles, bones, and joints
Visceral fibers	Innervate blood vessels, glands, and viscera
General fibers	Innervate widespread organs such as muscles, skin, glands, viscera, and blood vessels
Special fibers	Innervate more localized organs in the head, including the eyes, ears, olfactory and taste receptors, and muscles of chewing, swallowing, and facial expression

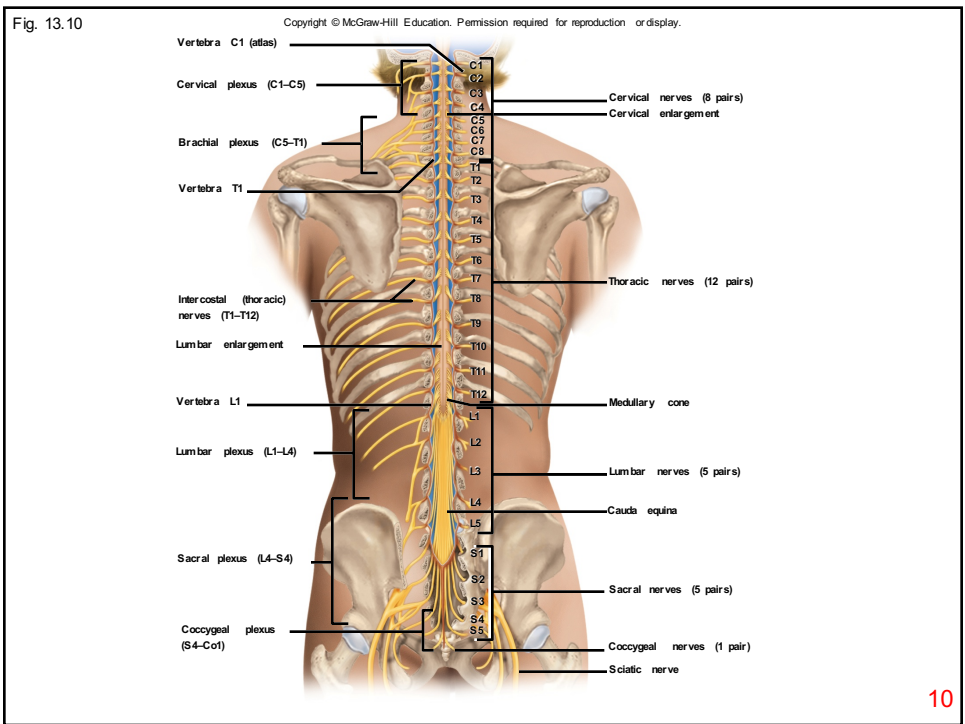
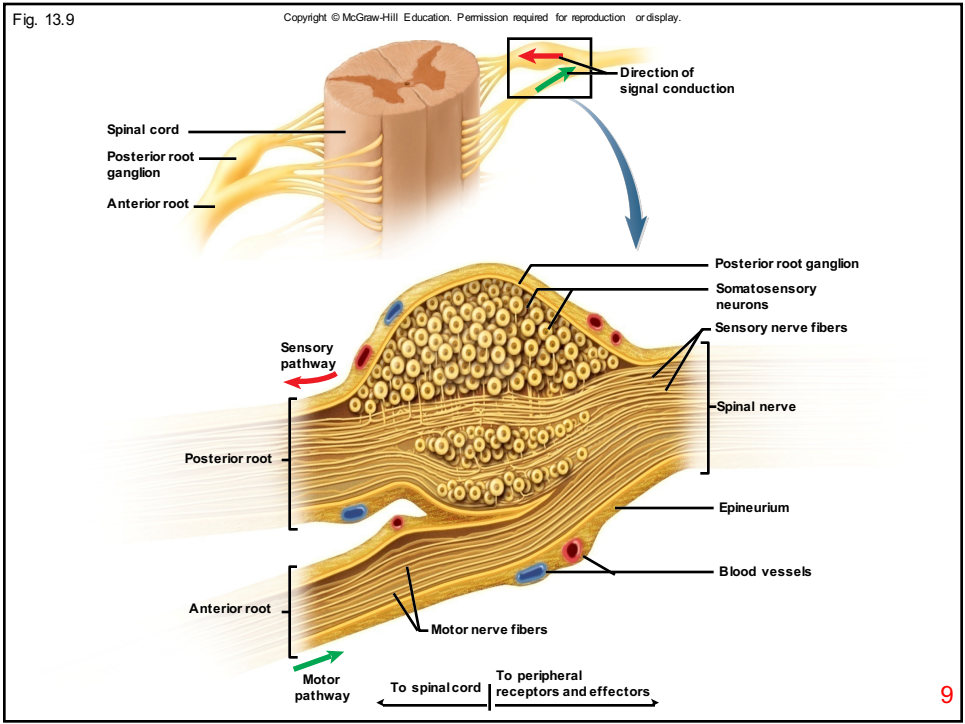
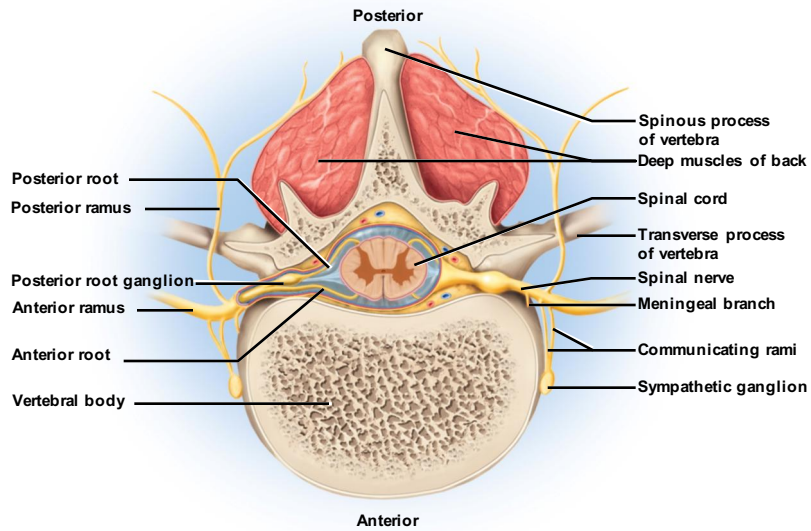




Fig. 13.11

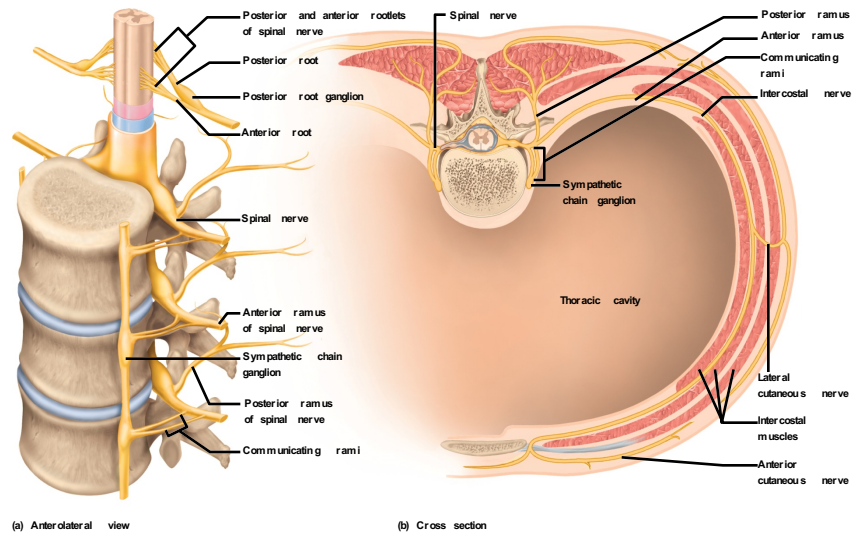
Copyright © McGraw-Hill Education. Permission required for reproduction or display.



11

Fig. 13.13

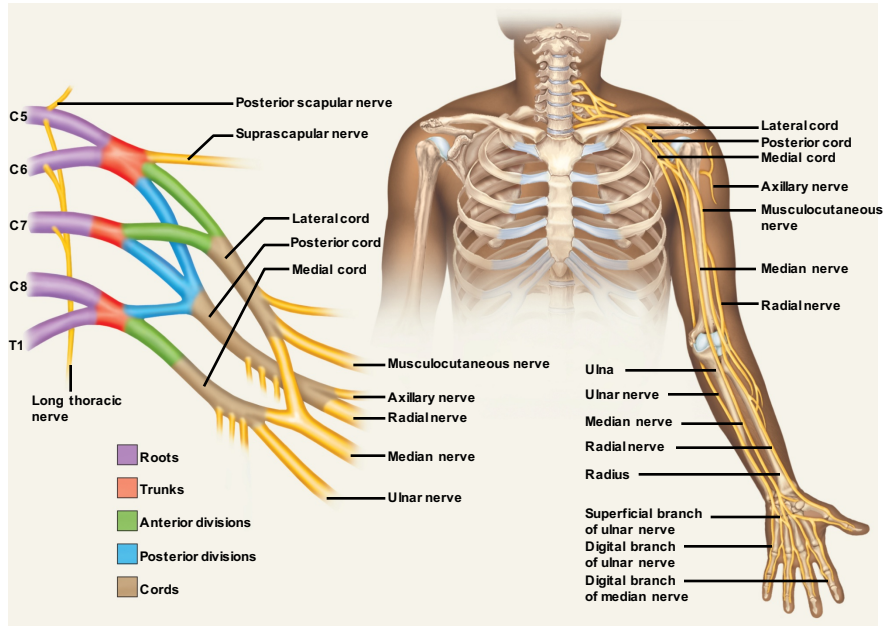
Copyright © McGraw-Hill Education. Permission required for reproduction or display.



12

Fig. 13.15

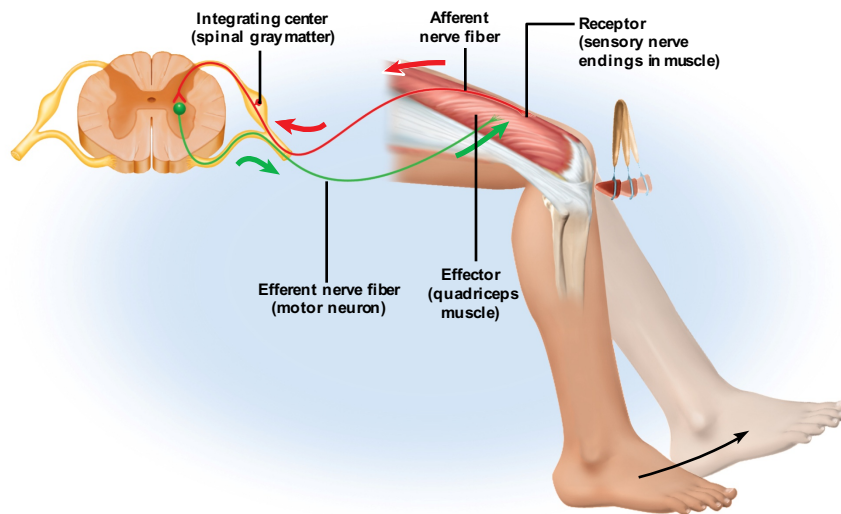
Copyright © McGraw-Hill Education. Permission required for reproduction or display.



13

Fig. 13.20

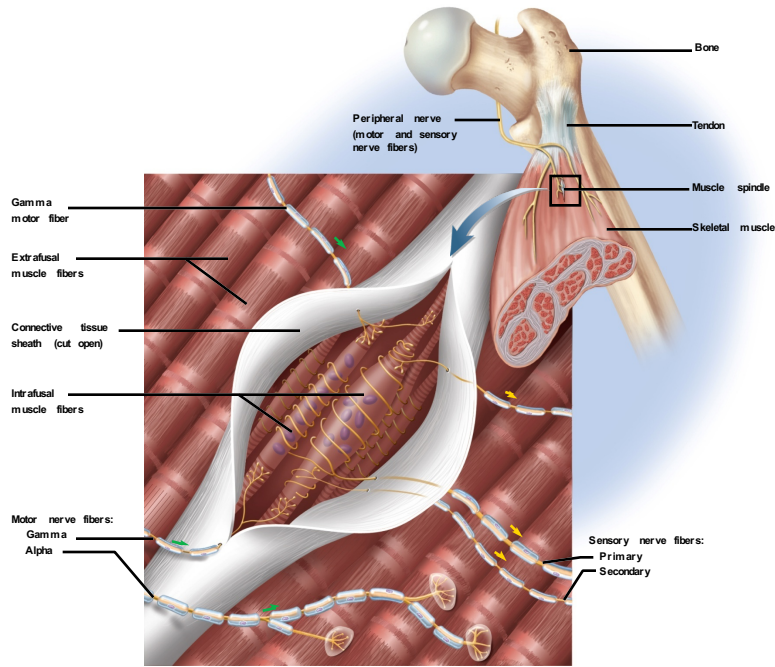
Copyright © McGraw-Hill Education. Permission required for reproduction or display.



14

Fig. 13.21

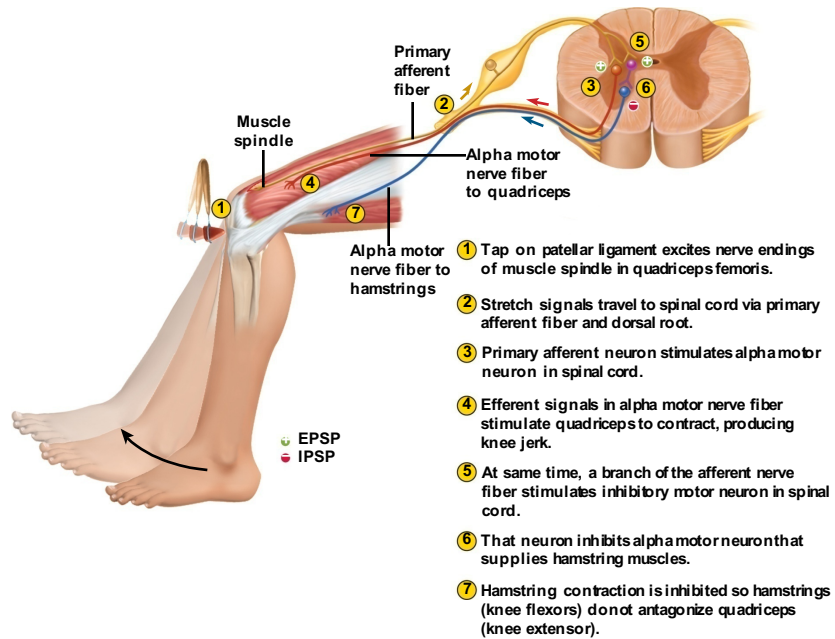
Copyright © McGraw-Hill Education. Permission required for reproduction or display.



15

Fig. 13.22

Copyright © McGraw-Hill Education. Permission required for reproduction or display.



16



